

Amphenol

HDM Series

Hermaphroditic Duplex
Miniature



The Fibre Optic Hermaphroditic range has now developed an additional product, the Hermaphroditic Duplex. This product has been specially designed to facilitate the interconnection of Fibre Optic Cable Assemblies, thus eliminating the need for polarising the assemblies and the use of in-line adaptors.

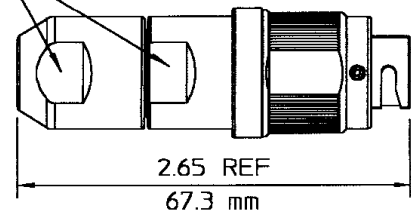
- Lightweight, small design, outer diameter of coupling ring measures less than 22.00mm.
- Low loss ceramic PC technology in multimode and singlemode.
- Connector and monobloc environmentally sealed.
- Fully hermaphroditic wipeclean bayonet mating mechanism.
- Fully removable front receptacle shell, for cleaning whilst in situ.
- Plug backshell allows for the removal of the ferrule monobloc for ease of cleaning.
- Choice of materials and plating.
- High tension cable load capability.

Amphenol

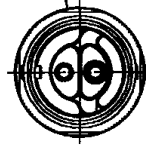
Technical Information

HDM PLUG ASSEMBLY
HDM-062-RX-XXX

SPANNER FLATS 5/8

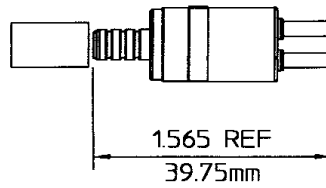


Ø0.850
21.6 mm



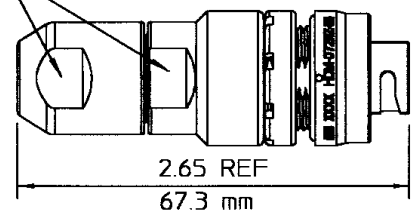
HDM MONOBLOC SUB ASSEMBLY
HDM49-06-014

Ø0.487 MAX
12.36mm



HDM IN-LINE FREE JAM NUT
RECEPTACLE ASSEMBLY
HDM-072-RX-014

SPANNER FLATS 5/8

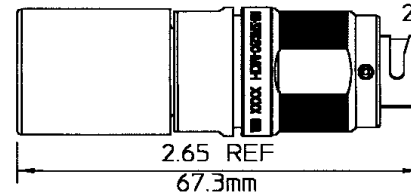


Ø0.880
22.35mm



TO SUIT HDM-062RX-014
AND HDM-072RX-014

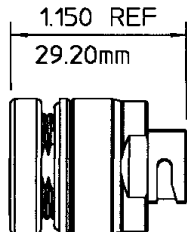
HDM LOOP BACK PLUG
HDM-062-RX-018



Ø0.880
22.35mm



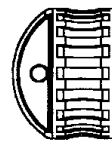
HDM PANEL MOUNTED JAM NUT
RECEPTACLE ASSEMBLY
HDM-072-RX-011



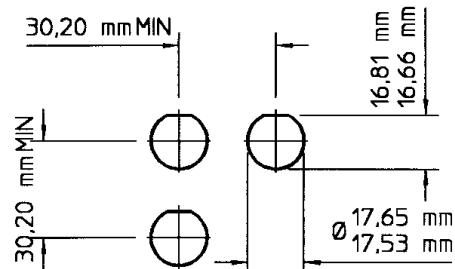
Ø0.850 TYP
21.5 mm



HDM DUST CAP ASSEMBLY
960-635



RECOMMENDED PANEL PIERCING
FOR HDM-072-XX-XXX SCALE 1:2



Performance

| Optical | |
|--------------------|--|
| Insertion loss | Typically .3dB using 62.5/125 |
| Repeatability | <0.15dB |
| Fibre types | 50/125 62.5/125 8/125 9/125 |
| Termination method | Epoxy/polish |

| Environmental | |
|-------------------|-------------------------------|
| Temperature range | -55°C / +85°C cable dependant |

| Mechanical | |
|------------|---|
| Durability | 500 matings |
| Materials | Shell: Aluminium |
| | Ferrule: Zirconia |
| | Alignment sleeve: Ceramic |
| | Seals: Silicon |

| Termination Tooling | |
|---------------------|--|
| Basic kit | 927 - 100 - 3000 |
| HDM add on | 927 - 100 - 4200 |
| Consumable pack | 927 - 100 - 6000 Approximately 50 terminations |



Part Number Information

| | | | | | | | |
|------------------------|------------|---|--|---|-----------|---|------------|
| Series | HDM | — | XXX | — | XX | — | XXX |
| Plug | 062 | | | | | | |
| Panel Mount Receptacle | 072 | | | | | | |
| Olive Drab Cadmium | RW | | | | | | |
| Olive Drab Zinc Cobalt | RZ | | | | | | |
| Cable Variant | 021 | | 2 x 2mm O/D 50/125 62.5/125 | | | | |
| | 011 | | 2 x 3mm O/D 50/125 62.5/125 | | | | |
| | 014 | | Duplex 5.5mm O/D Multimode 50/125 62.5/125 | | | | |
| | 018 | | Loop Back Connector | | | | |
| | | | Other fibre sizes available on request | | | | |

Sub Assembly Part Number Information

| | | | | | | | | | |
|----------------------------|------------|---|-----------|---|--------------------|---|-----------|---|------------|
| Series | HDM | — | 49 | — | XXX | — | XX | — | 014 |
| Sub Assembly | | | | | | | | | |
| Plug | 062 | | | | | | | | |
| Jam Nut Receptacle In Line | 072 | | | | | | | | |
| Olive Drab Cadmium | RW | | | | | | | | |
| Olive Drab Zinc Cobalt | RZ | | | | | | | | |
| Cable Variant | 014 | | | | (5.5mm O/D Duplex) | | | | |

Front Shell Sub Assembly Part Number Information

| | | | | | | | |
|----------------------------|------------|---|-----------|---|------------|---|-----------|
| Series | HDM | — | 49 | — | XXX | — | XX |
| Plug | 062 | | | | | | |
| Jam Nut Receptacle In Line | 072 | | | | | | |
| Olive Drab Cadmium | RW | | | | | | |
| Olive Drab Zinc Cobalt | RZ | | | | | | |
| Dust Cap | 960-635 | | | | | | |

For further information on cables, connectors and assemblies please consult your local office. Product specifications and performance characteristics are typical only, and subject to change.

Notice: Products are sold subject to Amphenol's conditions of sale ("the standard conditions"). All specifications and statements contained herein are believed to be correct at the time of printing, but no representation or warranty, express or implied, is given as to any specification or statement contained herein. Product specifications including performance characteristics are typical only and subject to deviation. Specifications are also subject to change without notice. Users should not assume that all safety measures are indicated or that other measures may not be required. No representation or warranty, express or implied, is given that any use of products (including any stated or suggested use) does not infringe any patent, registered design or other third party rights and no stated or suggested use of products can be taken to recommend any such infringement.